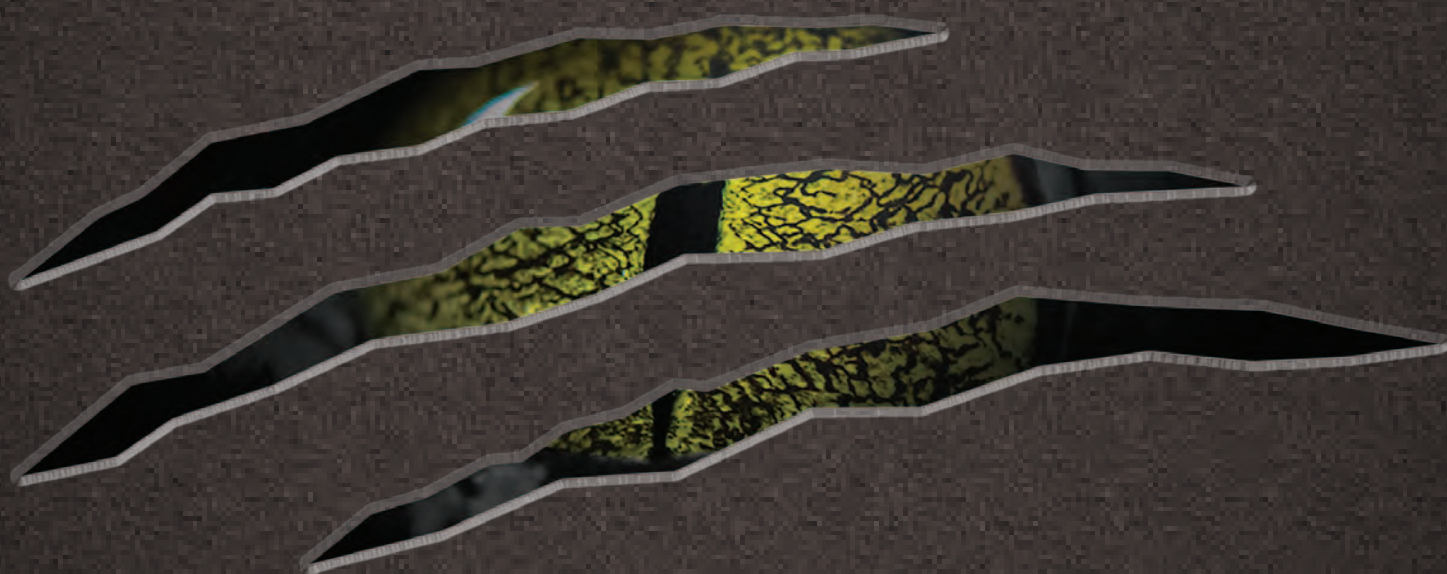


RAPTOR[®]

TOUGH AND TINTABLE
PROTECTIVE COATING



www.raptorcoatings.com



DRIVING SURFACE PERFECTION™

SURFACE PROTECTION

that stands up to the elements

RAPTOR Protective Coating provides surfaces with a barrier that can withstand the toughest situations.

Developed to tolerate most climatic conditions, **RAPTOR** is U.V. resistant and won't fade or "chalk" even after years in the sun. **RAPTOR** is also water resistant and protects surfaces from rust.

RAPTOR's versatility makes it ideal for almost any application. Spray or roll **RAPTOR** on high traffic areas; it is durable, stain resistant and easy to clean. Its flexible formulation can handle impacts without cracking, making it perfect for its most popular application as a truck bed liner.

RAPTOR is unlike other protective coatings. In case it does scratch (which is tough to do!), **RAPTOR** can easily be repaired. You can't do that with most of the other bed liners and protective coatings!

RAPTOR protects the roughest industrial surfaces as well as the smaller surfaces we rely on every day. It looks great and it lasts a long time.

When you need a surface protection solution that can stand up to the elements, choose **RAPTOR**...

About U-POL

U-POL is a world leader in automotive refinishing products specialising in fillers, coatings, aerosols, adhesives and paint related products.

Recognised globally with sales in over 100 countries, **U-POL** is committed to consistently providing customers with high quality products that professional technicians demand. Our heritage and experience of nearly 70 years in the industry, coupled with our continued investment in state-of-the-art manufacturing facilities and reputation for innovation, ensures that your **U-POL** experience is nothing less than world class.

U-POL has a comprehensive range of fillers and coatings and we are uniquely positioned to deliver solutions developed, tested and approved for the modern bodyshop. We know your reputation matters and that is why **U-POL** is investing in future innovation, to help your team get it right first time, every time.



The reasons to choose **RAPTOR**

1. CUSTOMISABLE

RAPTOR is available in black, white and tintable versions. The tintable version can be altered to suit the colour of your choice by adding up to 100ml of automotive solvent tint. **RAPTOR** can be applied as a flat finish through to a very coarse finish.

2. DURABLE

Provides a tough mechanical damage and stain resistant surface. Protects against rust, corrosion and extreme temperatures.

Resistant against fuels, hydraulic oils, urine, salt water and more.

3. U.V. RESISTANT

Stops colour fading.

4. WATER RESISTANT

Provides a water tight seal, keeping moisture out and reducing the chance of rust.

5. QUICK & EASY TO USE

Easy as Fill-Shake-Shoot. Can be applied with excellent adhesion across many substrates with either **RAPTOR** standard or professional vari-nozzle application guns, roller or brush. Easy to clean.

6. ANTI-CORROSIVE EPOXY PRIMER

Specifically designed to be used under **RAPTOR** Protective Coating for optimum performance.

7. SLIP RESISTANT ADDITIVE

The use of **RAPTOR** Traction with **RAPTOR** produces a slip resistant surface as defined by BS 7976-2 and ASTM E303-93.

3

Easy to use in simple steps

FILL

SHAKE

SHOOT



RAPTOR - TOUGH AND TINTABLE PROTECTIVE COATING

It is durable, resistant to mechanical damage, fuels, hydraulic oils, urine, salt water and more. Many applications are possible. We have compiled some of them by types of applications.



AUTOMOTIVE

1. Bed Liner
2. Automotive Undercoating
3. Total Body Protection
4. Sill Protection Bars
5. Body Panels
6. Bull Bars
7. Wheel Arches & Grills
8. Chassis
9. Bumpers
10. Engine Components
11. Plastic Trims

COMMERCIAL VEHICLES

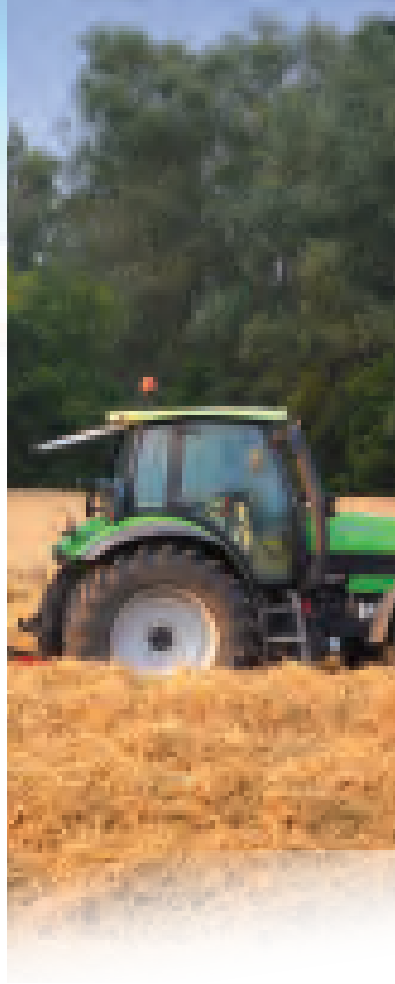
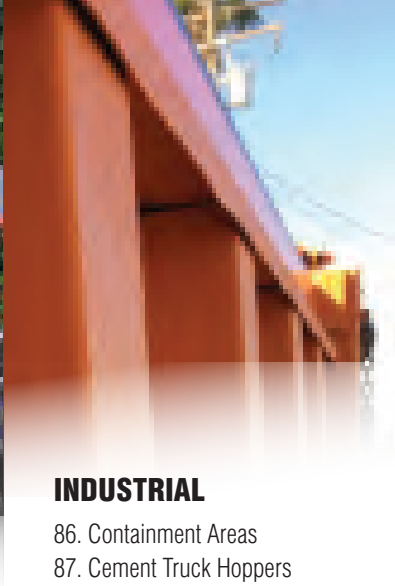
12. Van Interior
13. Chassis Frame
14. Cargo Van Interior
15. Lift Gates
16. Tanker Trailers
17. Hopper Trailers
18. Steps
19. Lifting Deck / Tail Lift
20. ISO Shipping Containers
21. Bumpers
22. Step Well
23. Wings
24. Cab
25. Recycling Equipment
26. Refuse Truck
27. Tipper Body
28. Horsebox
29. Armoured Vehicles
30. Flooring
31. Body Panels
32. Undercoating
33. Body Superstructure and Fabrications
34. Access and Egress Areas
35. Demountable Equipment
36. Fire Tenders
37. Bus and Coach Applications
38. Crane Equipment
39. Car Transporters

HOME

40. Porches
41. Garage Floors
42. Steps
43. Walkways
44. Paths
45. Wood Decks
46. Patios
47. Ladder Steps
48. Wheelbarrows
49. Basement Walls
50. Basement Floors
51. Tool Boxes
52. Gates
53. Pool Deck

MARINE

54. Boat Decks
55. Boat Hulls
56. Docks
57. Cabin Floors
58. Inboard Boat
59. Engine Parts
60. Ramps
61. Boardwalks
62. Oar Tips
63. Aluminium Boats
64. Bay Boats
65. Kayaks
66. Sailboats



RECREATIONAL

67. Camper Shells
68. Jet Ski Decks
69. Snowmobile Decks
70. Motor Home Roofs
71. Hockey Sticks
72. RV Transporters
73. Utility Trailers
74. ATV Trailers
75. Boat Trailers
76. Recreational Trailers
77. Snowmobile Trailers
78. Tow Trailers
79. Semi Trailers
80. Fifth Wheel Hitches
81. Animal Trailers
82. Trailer Hitches
83. Park Benches
84. Skate Parks
85. Caravans

INDUSTRIAL

86. Containment Areas
87. Cement Truck Hoppers
88. Loading Ramps
89. Loading Docks
90. Skips
91. Equipment Handles
92. Asphalt Coverings
93. Heavy Duty Equipment Buckets
94. Machinery Casings
95. Cold Storage Areas
96. Cinder Block Walls
97. Spreaders
98. Storage Tanks Exterior
99. Sewage Treatment
100. Thickener Tanks
101. Mining Equipment
102. Steel Beams
103. Pipelines Exterior
104. Propane Tanks
105. Stairwells
106. Hand Rails
107. Plant & Machinery Equipment
108. Aerial Platform Lifts

AGRICULTURAL

109. Tractor Bed
110. Horse Trailer
111. Silos
112. Fertilizer Equipment
113. Farm Equipment
114. Ploughs

COMMERCIAL

118. Wheelchair Ramps
119. Work Benches
120. Work Floors
121. Railings
122. Air Conditioning Casings
123. Car Washes
124. Curb Ramps
125. Rail Boxcar Floors
126. Recycle Bins and Skips
127. Trash Receptacles
128. Institutional Shower Floors
129. Subwoofer Enclosures
130. Fork Lift Shells

AIRCRAFT

115. Cargo Holds
116. Aircraft Hanger
117. Ground Service Equipment



RAPTOR Products



RAPTOR KIT

RAPTOR kits are ideal for medium and small applications and touch-ups. Compatible with **RAPTOR** standard and professional vari-nozzle application guns.

- 1-Bottle Kit contains 0.71L of **RAPTOR** and 0.24L of hardener
- 4-Bottle Kit contains 4 x 0.71L of **RAPTOR**, 0.95L of hardener and a measuring cup
- Typical coverage is 4.2 m² per litre

Part Number	Description	Colour	Units Per Case
RLB/S1	1-Bottle Kit	Black	6
RLT/S1	1-Bottle Kit	Tintable	6
RLB/S4	4-Bottle Kit	Black	1
RLW/S4	4-Bottle Kit	White	1
RLT/S4	4-Bottle Kit	Tintable	1

5L RAPTOR

The 5L **RAPTOR** tins are ideal for large areas such as trailers, floors, heavy equipment and full oversprays.

- Mix 3:1 (15L of **RAPTOR** to 5L of hardener) to make more than 20L of **RAPTOR** and covers approximately 60m²
- This can be brush applied, rolled or sprayed through pneumatic or conventional spray equipment

Part Number	Description	Colour	Units Per Case
RLB/5	5L Tin	Black	2
RLT/5	5L Tin	Tintable	2
RLH/5	5L Tin	Hardener	2

200L RAPTOR DRUMS

The 200L **RAPTOR** drum will provide you with the coverage and protection you need for large and OEM applications.

Part Number	Description	Colour	Units Per Case
RLBV/200	200L Drum	Black	1
RLTV/200	200L Drum	Tintable	1





RAPTOR 2K AEROSOL

The **RAPTOR** 2K Aerosol offers a fast, easy way to apply **RAPTOR** without compromising performance, no spray equipment necessary. The durability of **RAPTOR** with the convenience of an aerosol. Ideal for spot repairs and small jobs (typical coverage is 1.35 m² per can).

- Textured "gun" finish
- No mess, no clean-up application
- Easy and convenient - activate using the valve on base
- Pot life at 20°C when activated is 60 min
- Spraying at a distance of 60-90cm from the object

Part Number	Description	Colour	Units Per Case
RLB/AL	400ml Aerosol	Black	6

RAPTOR ANTI-CORROSIVE EPOXY PRIMER

The **RAPTOR** Anti-Corrosive Epoxy Primer is a 2K high performance primer, specifically designed to be used under **RAPTOR** protective coating.

It contains a blend of anti-corrosive additives to help inhibit rust and corrosion and has excellent salt spray resistance*. **RAPTOR** Anti-Corrosive Epoxy Primer's advanced resin technology improves adhesion to bare metal and most other prepared surfaces, and promotes intercoat performance to further extend the life of **RAPTOR** protective coating.

- Can also be applied directly on to surface rust**
- Can be applied wet on wet
- The **RAPTOR** Anti-Corrosive Epoxy Primer covers approximately 5.88m² @ 75µ DFT per litre

Part Number	Description	Colour	Units Per Case
REP/1LK	1L Kit	Grey	8
REP/5LK	5L Kit	Grey	1

* Test completed at >1000 hours according to ASTM protocols (B117) at an independent laboratory

** Metal should be prepared in accordance with the TDS



RAPTOR ACCESSORIES

U-POL offers a complete line of accessory products to prepare, apply and upgrade your **RAPTOR** application.

Part Number	Description	Units Per Case
GUN/VN	Professional Vari-Nozzle Application Gun	6
GUN/1	Standard Application Gun	5
RPTEP/AL	Acid Etch Primer 450ml Aerosol	6
RPTAP/AL	Adhesion Promoter 450ml Aerosol	6
RLTR/SM	Slip Resistant Additive Traction 200g Box. Clear - doesn't show up in tinted coating!	12



RAPTOR Certifications & Test Results

RAPTOR currently has been tested in accordance with the following test methods.

1. ANTI-SLIP

Accredited BS 7976-2 and ASTM E303-93
(when used with **RAPTOR** Traction)

2. FLAMMABILITY

FMVSS 302, ISO 3795, BS AU169A

3. WATERSOAK

ASTM D870-15 Pass

4. SALT SPRAY

ASTM B 117-16
RAPTOR Anti-Corrosive Epoxy Primer test
completed at >1000 hours according to ASTM
protocols (B117) at an independent laboratory

5. CHIP RESISTANCE

ASTM D3359-09E2

6. IMPACT RESISTANCE

ASTM D2794-93(2010)

7. TABER ABRASION RESISTANCE

ASTM D4060-14

CHEMICAL RESISTANCE

ASTM D1308

Diesel

NaOH

Petrol

Hydraulic Oil

Xylene

Alcohol

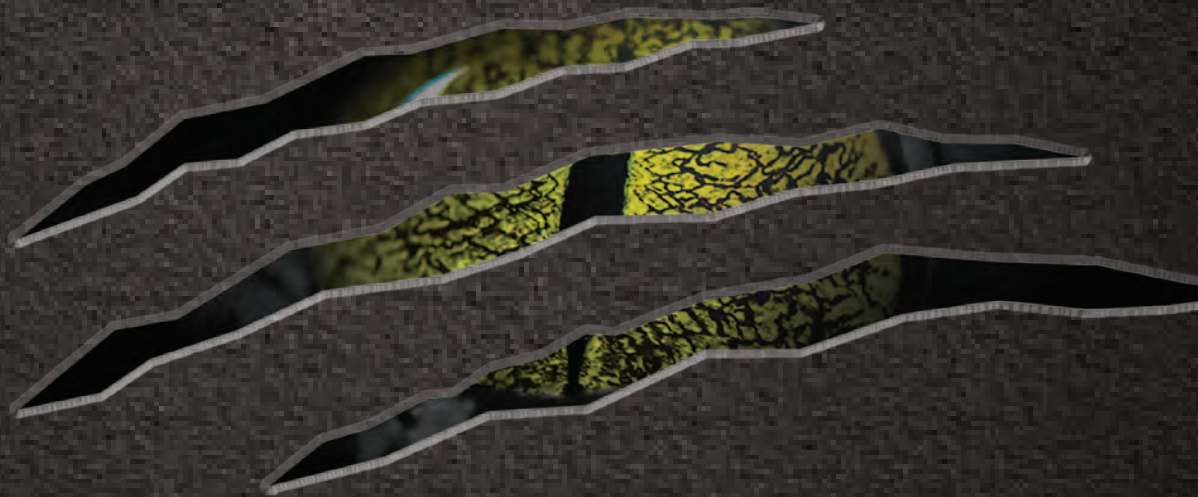
Bleach

Horse Urine

10% Hydrochloric Acid

10% Sulphuric Acid

85.5% Phosphoric Acid



COATING REGULATIONS

Coating regulations differ by country, industry and application. Inclusion of a specific application within this catalogue is meant to demonstrate ability of this product to perform technically in that application, but does not mean that it has regulatory approval for this use in all different legislative regimes (for example having the relevant VOC for that specific use in every market). If you need specific advice regarding the local legislative frameworks for use of **RAPTOR** in any given application, please contact your **U-POL** representative.



RAPTOR Specification

MIX RATIO	3:1
TINTABLE MIX	By Volume: 50-100ml of 2K solvent based toners
THINNER	Not required. Up to 20% standard thinner optional.
VOC	See Technical Datasheet.
COMPATIBILITY	Original paint, aluminium, bare metal, galvanised, polyester fillers, rigid plastic, fiberglass, GRP, SMC, E-coat, concrete, wood, epoxy primer.
PREPARATION	Remove all loose material and any rust from the surface to be coated. Clean and degrease the surface. Abrade the surface with P80-P180 grit sand paper. Re-clean the surface. Refer to the Technical Datasheet for more details and various surfaces.
RAPTOR APPLICATION GUNS	No reduction required. We recommend using RAPTOR application guns (GUN/1 or GUN/VN).
AIR PRESSURE	40-60 PSI. 2.75 - 4.1 bar.
COATS	2 medium coats. Dry film thickness approximately 460 microns.
FLASH OFF TIME	60 minutes rollable or RAPTOR Application Gun, 35 minutes HVLP.
CURE TIMES	Less than 1 hour touch dry, 48 to 72 hours in light duty service, depending on coating thickness.
POT LIFE	60 minutes @ 20 °C
COVERAGE	Typical coverage is 4.2 m ² per litre.
RESISTANT TO	Solvents, xylene, bleach, phosphoric acid, hydrochloric acid, hydraulic fluid, brake fluid, Skydrol™, gasoline, diesel fuel, alcohol, salt water, animal urine.
TEMPERATURE RESISTANCE	From -18 °C to +95 °C constant.



RAPTOR Application & Procedure Guide

RAPTOR is a textured coating suitable for use over the following properly prepared substrates:

OEM paint, primed metal, primed aluminium, primed galvanized, fibreglass, SMC, wood, concrete and powder coat.

Process tools required: RAPTOR product, safety glasses, respirator, P80-P180 grit sandpaper, red scuff pads, RAPTOR application gun or professional vari-nozzle application gun (GUN/1 or GUN/VN) or roller brush.



CLEAN SUBSTRATE

Remove all loose material. Clean and degrease surface. We recommend using **U-POL SYSTEM 20** degreasers (S2001/5 or S2002/5).



SAND SUBSTRATE

Sand surface with P80-P180 grit paper, use red scuff pad for difficult to sand areas. Re-clean the surface. **RAPTOR** can be directly applied over painted surfaces that have been cleaned and sanded.



PRIME SURFACE

Spot prime any areas where bare metal has been exposed. Bare metal, aluminum or galvanized surfaces must be primed with an etch primer like **RAPTOR Acid Etch Primer (RPTAP/AL)**, or **RAPTOR Anti-Corrosive Epoxy Primer** for optimum performance. Use **RAPTOR Adhesion Promoter (RPTAP/AL)** in hard to reach areas.



MIX RAPTOR

RAPTOR has a 3:1 mix ratio. Pour 0.24L of the **RAPTOR** hardener into the pre-filled bottle of 0.71L of **RAPTOR** coating or combine them at a 3 parts **RAPTOR** to 1 part hardener ratio in a separate container. For tinting, please consult the technical datasheet.



SHAKE

Shake bottle or stir (if mixing in separate container) for 2 minutes to thoroughly mix the product.



SHOOT

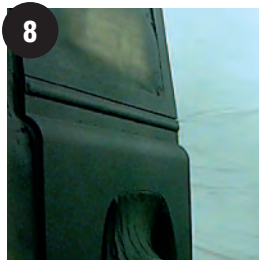
Attach application gun to bottle. Adjust supplied air pressure to 2.75-4.1 bar depending on desired texture. At a distance of 45-150cm, apply to the prepared surface in a sweeping motion to obtain desired texture. Pot life: approximately 60 minutes.

We recommend using **RAPTOR** application guns (GUN/1 or GUN/VN).



ADDITIONAL COATS

2 or 3 light coats are better than one heavy coat. If applying more than one coat, allow **RAPTOR** to flash 60 minutes between coats. If more than 5 hours between coats, allow it to set overnight, lightly scuff and apply additional coat(s).



TOP COATING

RAPTOR can be overpainted with most modern paint systems. Allow **RAPTOR** to dry for 24 hours, scuff with fine scuff pad, clean, apply top coat or clearcoat if desired. We recommend using **SYSTEM 20** clearcoats (such as S2081SR).



DRYING TIMES

Dry to touch: 1 hour.
Light duty use: 2-3 days.
Heavy duty use: 7 days.



EQUIPMENT CLEAN UP

Clean gun, equipment and over spray with lacquer thinner or acetone before **RAPTOR** is fully cured.

RAPTOR Texture Application

Flat Finish

First coat: Mix **RAPTOR** and allow to stand for 10 minutes
3:1+15%, HVLP 1.7, 2 Bar pressure at gun and applied as a primer left to flash for 30 minutes

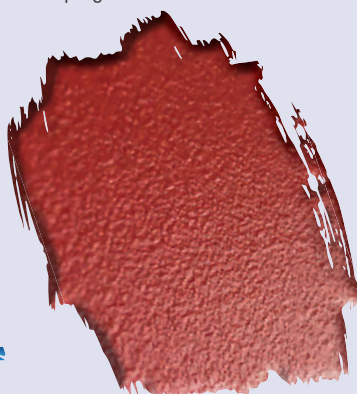
Second coat: 3:1+15%, HVLP 1.7, 2 Bar pressure at gun and applied as a primer



Standard Coarse Finish

Standard texture through Application Gun (GUN/1 & GUN/VN): Mix **RAPTOR** and allow to stand for 10 minutes
4 Bar (60 PSI)

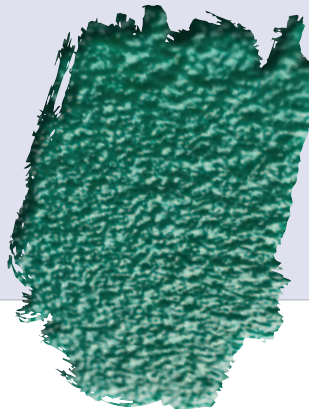
Distance from object 50cm
2 coats with an even sweeping motion



Really Coarse Finish

Coarse texture through Application Gun (GUN/1 & GUN/VN): Mix **RAPTOR** and allow to stand for 10 minutes
3 Bar

Distance from object 50cm
2 coats: 1 even sweeping motion, second dropping the coat over the first

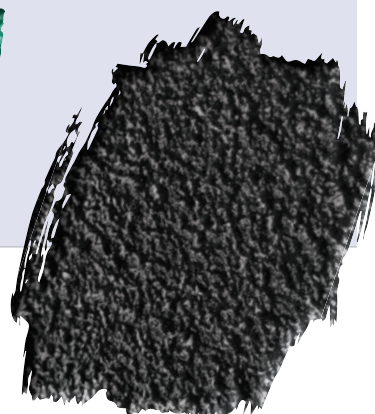


Slip-Resistant Finish

Coarse texture through Application Gun (GUN/1 & GUN/VN): Mix **RAPTOR** and allow to stand for 10-minutes
3 Bar

Distance from object 50cm
2 coats - 1 even sweeping motion, second dropping the coat over the first

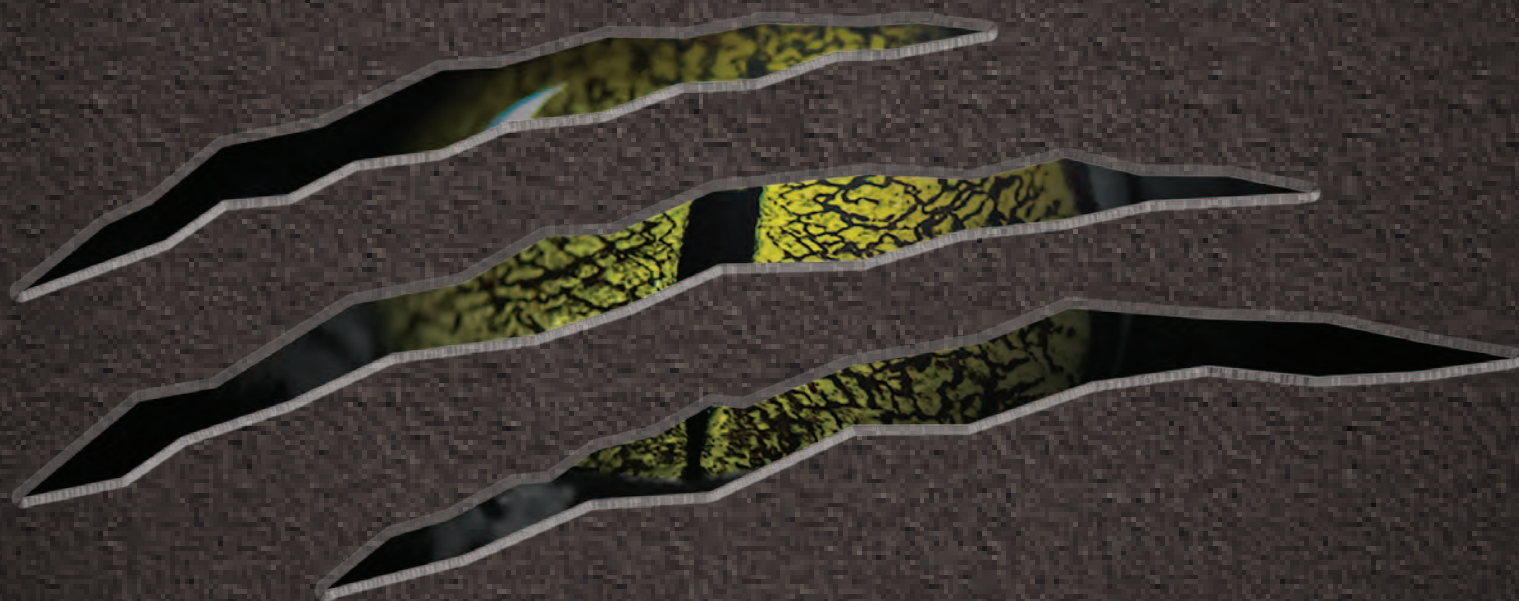
Add a **RAPTOR** Traction box on the last coat





U-POL Limited
4th Floor, The Grange,
100 High Street, London, N14 6BN
Tel: +44 (0)20 8492 5920
Fax: +44 (0)20 8181 6911
Email: uk.sales@u-pol.com

U-POL and RAPTOR are registered
trademarks of U-POL Ltd ©2018.
PROM006RPT/V1



www.raptorcoatings.com



DRIVING SURFACE PERFECTION™